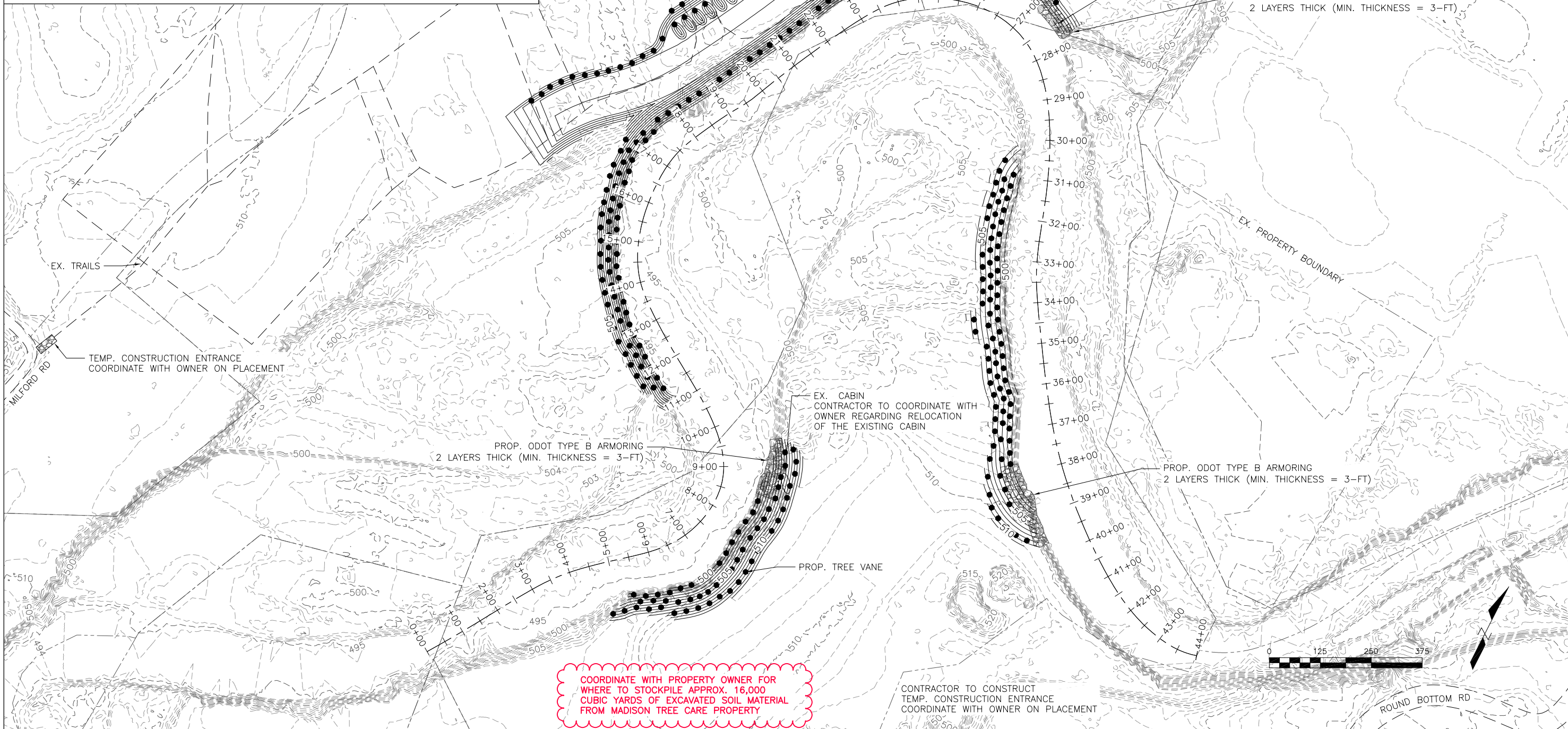


GENERAL NOTES:

1. CONTRACTOR TO FIELD-VERIFY ALL UTILITIES WITHIN THE PROJECT AREA. OUPS PHONE NUMBER IS 800-362-2764 (TOLL-FREE). NON-MEMBERS MUST BE CALLED DIRECTLY.
2. NO EQUIPMENT OR FILL PLACED IN ANY JURISDICTIONAL WATER OF THE US.
3. NO TREE CLEARING SHALL TAKE PLACE BETWEEN APRIL 1 AND SEPTEMBER 30. COORDINATE WITH USFWS PRIOR TO ANY REMOVAL OF TREES WITH DIAMETERS LARGER THAN 3-INCHES. CONTRACTOR SHALL TAKE CARE TO PRESERVE EXISTING NATIVE VEGETATION TO THE EXTENT FEASIBLE.
4. CONSTRUCTION ENTRANCE SHALL BE LEFT IN PLACE UPON CONSTRUCTION COMPLETION.
5. EXISTING CONTOURS BASED OFF OF PUBLICLY AVAILABLE LIDAR DATA FROM 2007 AND MANUALLY MANIPULATED TO MATCH THE AERIAL STREAM BANKS FROM 2022. MEASUREMENTS AND QUANTITIES OF MATERIALS THAT MAY BE SHOWN ON PLANS ARE APPROXIMATE AND INCLUDED FOR CONVENIENCE ONLY. THE CONTRACTOR SHALL BE RESPONSIBLE FOR VERIFYING ALL MEASUREMENTS TO THEIR OWN SATISFACTION AND FURNISHING WHATEVER QUANTITY OF MATERIALS NECESSARY TO CONSTRUCT THE PROJECT IN ACCORDANCE WITH THESE PLANS. THERE WILL BE NO ADJUSTMENT IN THE CONTRACT SUM FOR ANY ADDITIONAL AMOUNT OR TYPES OF MATERIALS IN ADDITION TO THOSE LISTED.
6. PARCEL BOUNDARY BASED ON PUBLICLY AVAILABLE DATA. CONTRACTOR TO COORDINATE WITH GOV. AGENCIES AND OWNER TO LOCATE PROPERTY PINS AND ENSURE WORK REMAINS WITHIN THE PROPERTY EXTENTS OF THE MADISON TREE CARE & LANDSCAPING, INC. AND VALLEY VIEW FOUNDATION.
7. CONTRACTOR TO COORDINATE WITH THE GRANT MANAGER PRIOR TO CONSTRUCTION TO ENSURE THAT ALL APPLICABLE PERMITS ARE IN PLACE AHEAD OF CONSTRUCTION. CONTRACTOR TO ENSURE EFFECTIVE INSTALLATION AND MAINTENANCE OF ANY/ALL NECESSARY EROSION CONTROL MEASURES IN ACCORDANCE WITH APPLICABLE FEDERAL, STATE, AND LOCAL EROSION AND SEDIMENT CONTROL REGULATIONS.



PREPARED FOR:
CLERMONT SOIL & WATER
CONSERVATION DISTRICT

OPTION I
LOWER EAST FORK PROJECT

DATE	

6/30/2023

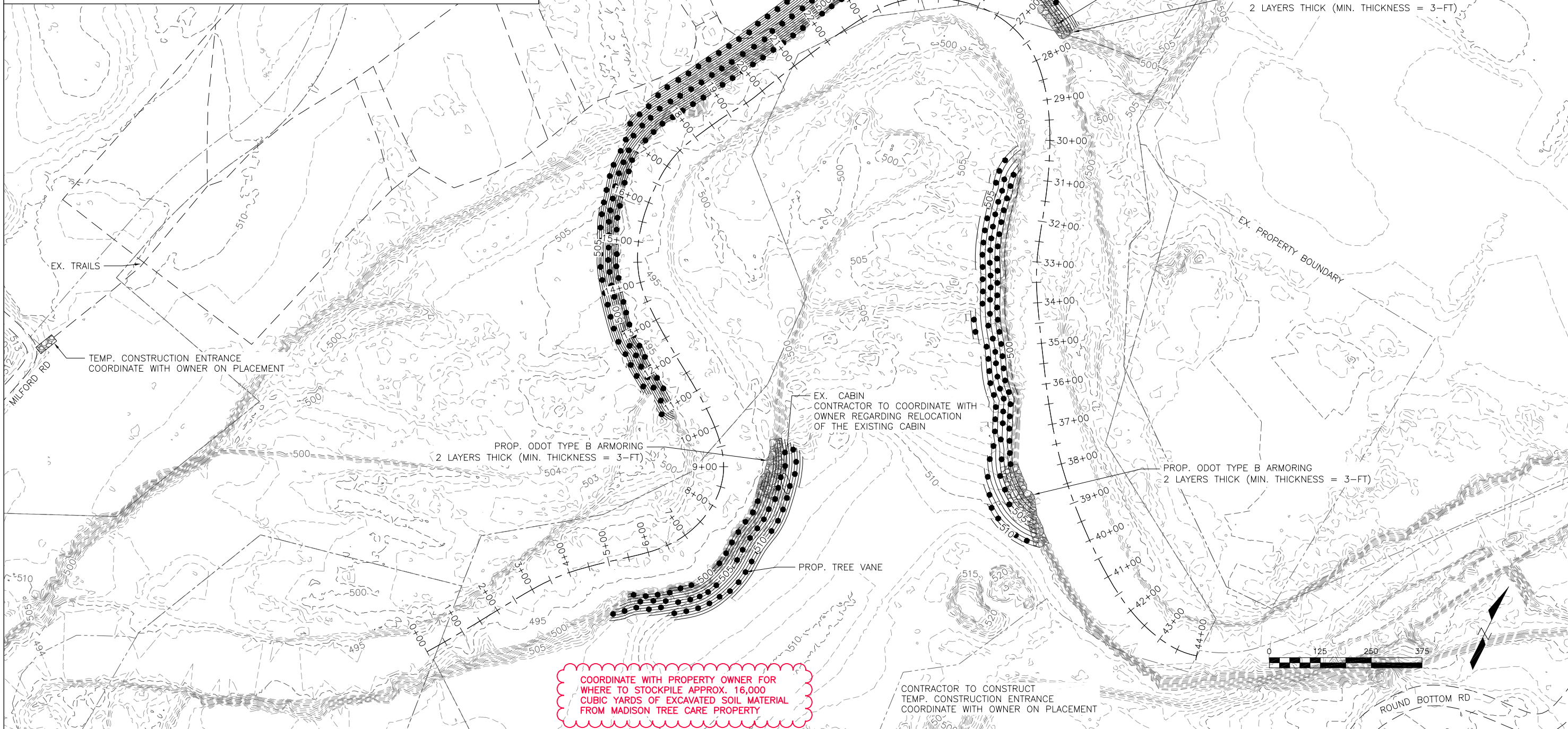
DRAWN BY: AER



SHEET NUMBER
1

GENERAL NOTES:

1. CONTRACTOR TO FIELD-VERIFY ALL UTILITIES WITHIN THE PROJECT AREA. OUPS PHONE NUMBER IS 800-362-2764 (TOLL-FREE). NON-MEMBERS MUST BE CALLED DIRECTLY.
2. NO EQUIPMENT OR FILL PLACED IN ANY JURISDICTIONAL WATER OF THE US.
3. NO TREE CLEARING SHALL TAKE PLACE BETWEEN APRIL 1 AND SEPTEMBER 30. COORDINATE WITH USFWS PRIOR TO ANY REMOVAL OF TREES WITH DIAMETERS LARGER THAN 3-INCHES. CONTRACTOR SHALL TAKE CARE TO PRESERVE EXISTING NATIVE VEGETATION TO THE EXTENT FEASIBLE.
4. CONSTRUCTION ENTRANCE SHALL BE LEFT IN PLACE UPON CONSTRUCTION COMPLETION.
5. EXISTING CONTOURS BASED OFF OF PUBLICLY AVAILABLE LIDAR DATA FROM 2007 AND MANUALLY MANIPULATED TO MATCH THE AERIAL STREAM BANKS FROM 2022. MEASUREMENTS AND QUANTITIES OF MATERIALS THAT MAY BE SHOWN ON PLANS ARE APPROXIMATE AND INCLUDED FOR CONVENIENCE ONLY. THE CONTRACTOR SHALL BE RESPONSIBLE FOR VERIFYING ALL MEASUREMENTS TO THEIR OWN SATISFACTION AND FURNISHING WHATEVER QUANTITY OF MATERIALS NECESSARY TO CONSTRUCT THE PROJECT IN ACCORDANCE WITH THESE PLANS. THERE WILL BE NO ADJUSTMENT IN THE CONTRACT SUM FOR ANY ADDITIONAL AMOUNT OR TYPES OF MATERIALS IN ADDITION TO THOSE LISTED.
6. PARCEL BOUNDARY BASED ON PUBLICLY AVAILABLE DATA. CONTRACTOR TO COORDINATE WITH GOV. AGENCIES AND OWNER TO LOCATE PROPERTY PINS AND ENSURE WORK REMAINS WITHIN THE PROPERTY EXTENTS OF THE MADISON TREE CARE & LANDSCAPING, INC. AND VALLEY VIEW FOUNDATION.
7. CONTRACTOR TO COORDINATE WITH THE GRANT MANAGER PRIOR TO CONSTRUCTION TO ENSURE THAT ALL APPLICABLE PERMITS ARE IN PLACE AHEAD OF CONSTRUCTION. CONTRACTOR TO ENSURE EFFECTIVE INSTALLATION AND MAINTENANCE OF ANY/ALL NECESSARY EROSION CONTROL MEASURES IN ACCORDANCE WITH APPLICABLE FEDERAL, STATE, AND LOCAL EROSION AND SEDIMENT CONTROL REGULATIONS.



COORDINATE WITH PROPERTY OWNER FOR WHERE TO STOCKPILE APPROX. 16,000 CUBIC YARDS OF EXCAVATED SOIL MATERIAL FROM MADISON TREE CARE PROPERTY

CONTRACTOR TO CONSTRUCT TEMP. CONSTRUCTION ENTRANCE COORDINATE WITH OWNER ON PLACEMENT

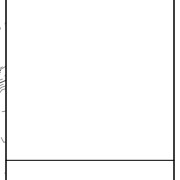
PREPARED FOR:
CLERMONT SOIL & WATER CONSERVATION DISTRICT

OPTION 2
LOWER EAST FORK PROJECT

DATE	

6/30/2023

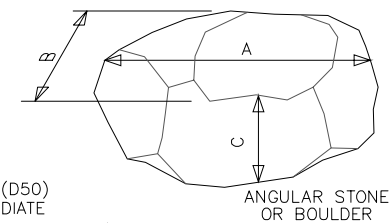
DRAWN BY: AER



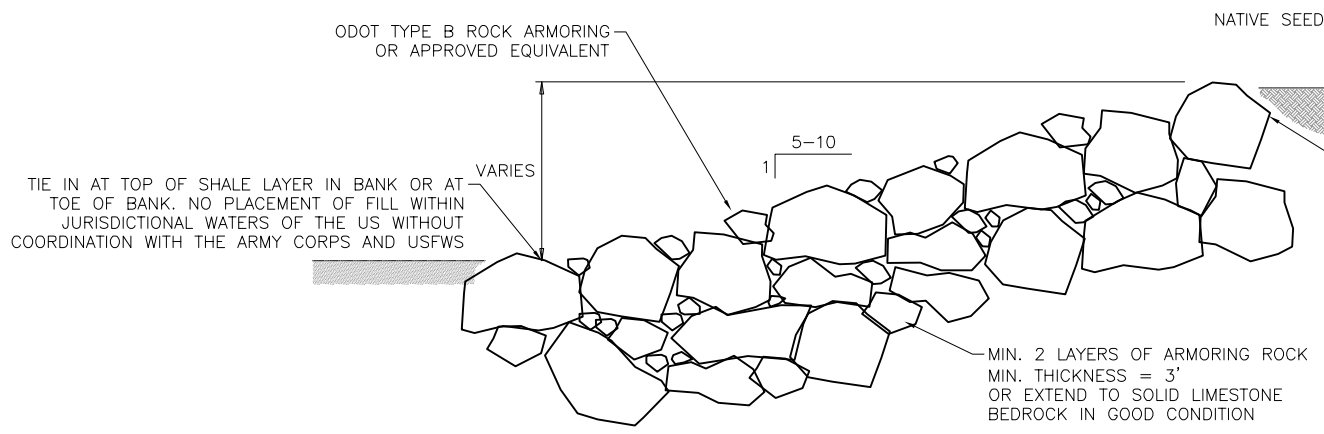
SHEET NUMBER
2

REACH INFORMATION TABLE

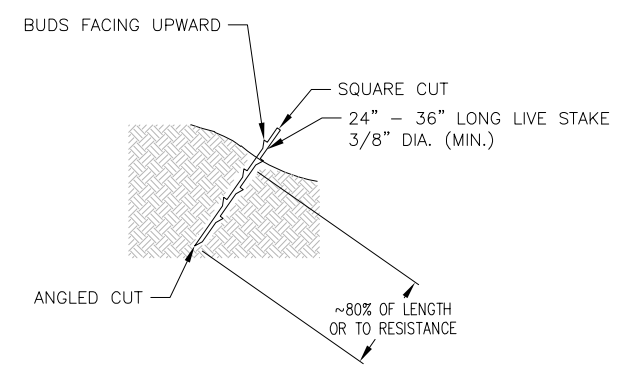
REACH	US STATION	DS STATION	DESCENDING BANK	TYPICAL SIDE SLOPE (H:V)	ROCK CLASS FOR ROCK ARMORING	STRATEGY
OPTION 1 - SEE PAGE 1 FOR MORE INFORMATION						
LOWER EAST FORK	39+78.00	37+00.00	LEFT	1:10	B	REHABILITATION
LOWER EAST FORK	37+00.00	30+41.00	LEFT	1:12	B	REHABILITATION
LOWER EAST FORK	27+75.00	24+35.00	RIGHT	1:7	B	REHABILITATION
LOWER EAST FORK	24+35.00	11+00.00	RIGHT	1:5	B	REHABILITATION
LOWER EAST FORK	9+53.50	4+50.00	LEFT	1:6.5	B	REHABILITATION
OPTION 2 - SEE PAGE 2 FOR MORE INFORMATION						
LOWER EAST FORK	39+78.00	37+00.00	LEFT	1:10	B	REHABILITATION
LOWER EAST FORK	37+00.00	30+41.00	LEFT	1:12	B	REHABILITATION
LOWER EAST FORK	27+75.00	11+00.00	RIGHT	1:5	B	REHABILITATION
LOWER EAST FORK	9+53.50	4+50.00	LEFT	1:6.5	B	REHABILITATION



CLASS	MEDIAN (D50) INTERMEDIATE "B" AXIS DIMENSION (IN.)	PARTICLE WEIGHT (LBS)
ODOT TYPE B	18	300

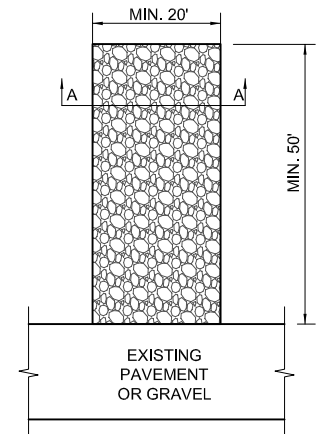


ODOT TYPE B CROSS SECTION VIEW
N.T.S.

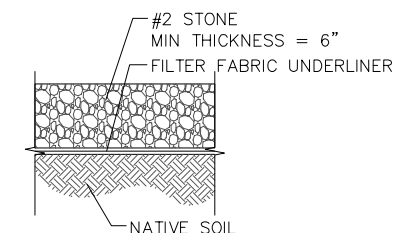


STREAM LIVE STAKING DETAIL
N.T.S.

- LIVE STAKE NOTES:
- HARVEST AND INSTALL STEMS DURING DORMANT SEASON.
 - STEMS DELIVERED IN ADVANCE OF PLANTING SHALL BE STORED APPROPRIATELY.
 - USE LIVE, HEALTHY AND STRAIGHT WOOD STAKES WITH CLEAN CUTS AS DIRECTED ON DETAIL. STEMS SHALL BE FREE OF DEFECTS SUCH AS KNOTS, SUN-SCALING, OR OTHER INJURIES WITH BARK INTACT.
 - STEMS ARE TO BE INSTALLED THROUGH THE COIR FABRIC OR STRAW MAT (IF PRESENT).
 - MAKE PILOT HOLES AS NECESSARY TO AVOID DAMAGING STEMS DURING INSTALLATION. DRIVE INTO PLACE VIA HAND-APPLIED PRESSURE. IF NECESSARY, A DEAD BLOW HAMMER OR APPROVED EQUIVALENT MAY BE USED. THE PILOT HOLE SHALL BE LESS THAN THE DIAMETER OF THE STAKE TO ENSURE FIRM CONTACT BETWEEN THE STAKE AND SOIL.
 - SOAK STEMS IN WATER FOR A MINIMUM OF 24 HOURS PRIOR TO INSTALLATION.
 - FIELD LOCATE WINTER BASEFLOW WATER ELEVATION AND PLACE LIVE STAKES AS SHOWN ON THE SCHEMATIC.
 - AFTER INSTALLATION, TAMP THE SOIL AROUND EACH STEM.



TEMPORARY CONSTRUCTION ENTRANCE
PLAN VIEW



SECTION A-A

NOTE:
CONTROL DUST DURING HOT, DRY WEATHER BY SEEDING OR MULCHING BARE AREAS PROMPTLY, WETTING HAUL ROADS AS NEEDED, OR APPLYING APPROVED CHEMICAL SOIL BINDERS.

TEMPORARY CONSTRUCTION ENTRANCE DETAILS

N.T.S.
THIS DETAIL REFERS TO THE MINIMUM DIMENSIONS AT THE ENTRANCE FROM THE GRAVEL PARKING LOT. CONTRACTOR IS RESPONSIBLE FOR MAINTAINING THE CONSTRUCTION ACCESS ROAD FROM HERE TO THE SITE, WHICH IS APPROX 3,000' LONG, THROUGHOUT THE DURATION OF CONSTRUCTION. FINAL CONDITION OF THE ACCESS ROAD MUST MATCH OR BE IMPROVED AS COMPARED TO THE CONDITION PRIOR TO CONSTRUCTION.

A MINIMUM OF 70% OF ALL ARMORING ROCK VOLUME IS TO MEET OR EXCEED THE SPECIFICATIONS FOR THE DESIGNATED ROCK CLASS. VOID SPACES ARE TO BE FILLED WITH SMALLER ROCK AND TIGHTLY PACKED SO THAT ALL PARTICLES ARE MECHANICALLY CONNECTED. THERE ARE TO BE NO LOOSE MEMBERS.

PREPARED FOR:
CLERMONT SOIL & WATER
CONSERVATION DISTRICT

DETAILS
LOWER EAST FORK PROJECT

DATE

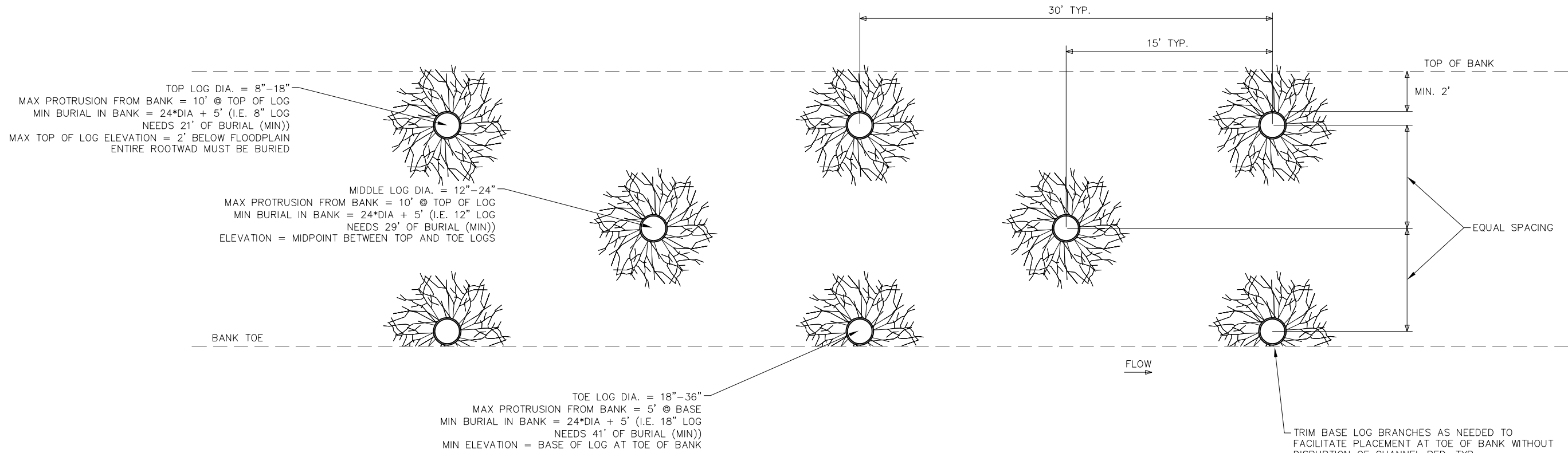
6/30/2023

DRAWN BY: AER

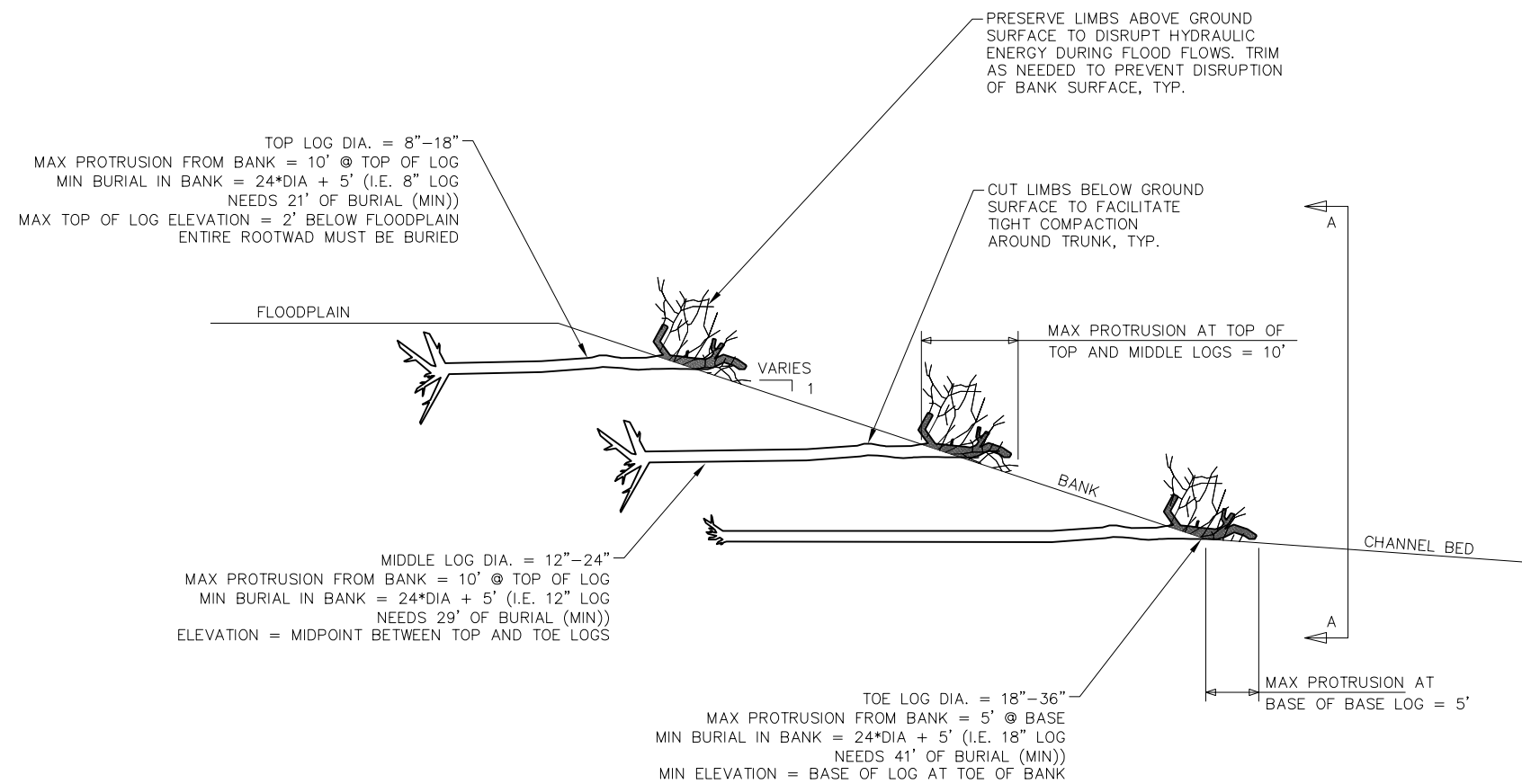


SHEET NUMBER

3



TREE VANE BANK RESTORATION (TIED INTO TOE OF BANK) – PROFILE VIEW (A-A)
 N.T.S.



TREE VANE BANK RESTORATION (TIED INTO TOE OF BANK) – CROSS SECTION VIEW
 N.T.S.

NOTE: MINIMUM BURIAL EXTENTS PROVIDED FOR CONVENIENCE ONLY. CONTRACTOR SHALL TAKE MEASURES TO PREVENT FLOATING DURING FLOOD FLOWS (E.G., ADDITIONAL BURIAL LENGTH AND DEPTH, SATURATING THE LOGS PRIOR TO BURIAL, ADDITIONAL ANCHORING STRATEGIES, ETC.) AT NO ADDITIONAL COST TO OWNER

PREPARED FOR:
 CLERMONT SOIL & WATER
 CONSERVATION DISTRICT

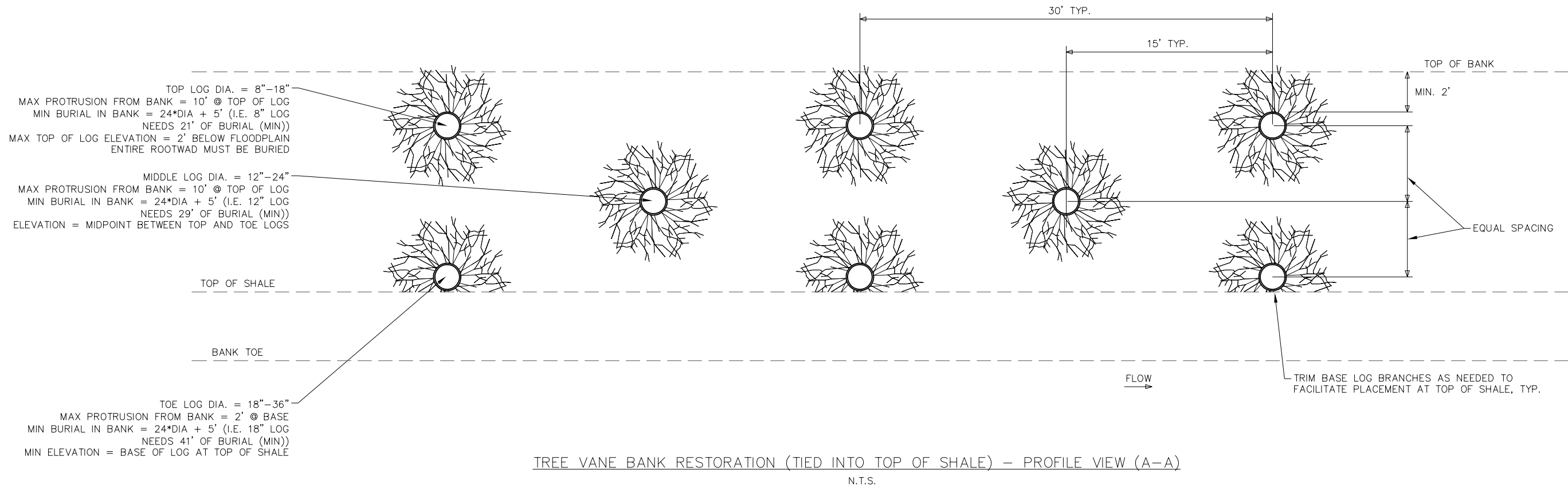
DETAILS
 LOWER EAST FORK PROJECT

DATE					
------	--	--	--	--	--

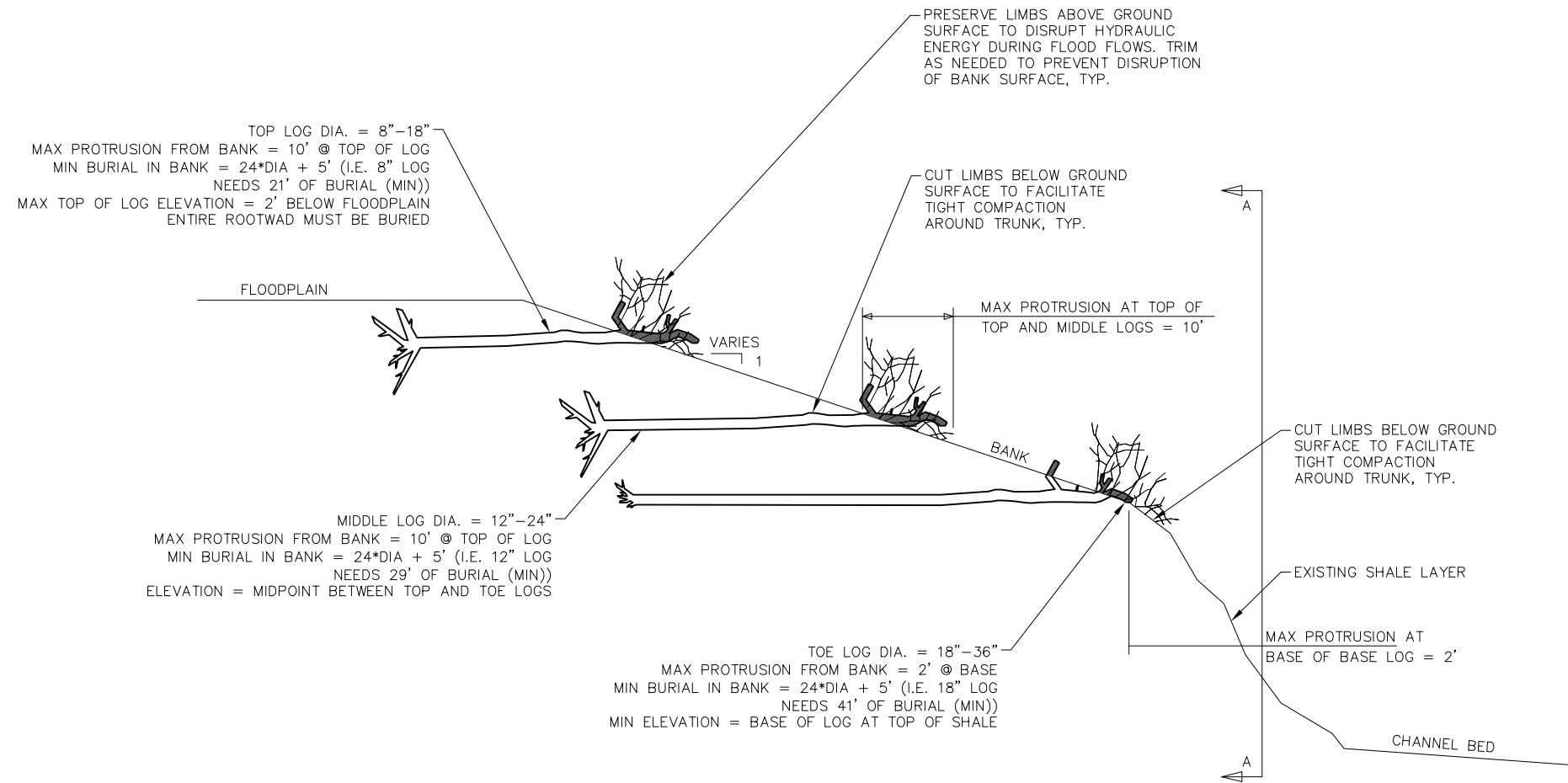
6/30/2023
 DRAWN BY: AER



SHEET NUMBER
 4



TREE VANE BANK RESTORATION (TIED INTO TOP OF SHALE) – PROFILE VIEW (A-A)
 N.T.S.



TREE VANE BANK RESTORATION (TIED INTO TOP OF SHALE) – CROSS SECTION VIEW
 N.T.S.

NOTE: MINIMUM BURIAL EXTENTS PROVIDED FOR CONVENIENCE ONLY. CONTRACTOR SHALL TAKE MEASURES TO PREVENT FLOATING DURING FLOOD FLOWS (E.G., ADDITIONAL BURIAL LENGTH AND DEPTH, SATURATING THE LOGS PRIOR TO BURIAL, ADDITIONAL ANCHORING STRATEGIES, ETC.) AT NO ADDITIONAL COST TO OWNER

PREPARED FOR:
 CLERMONT SOIL & WATER
 CONSERVATION DISTRICT

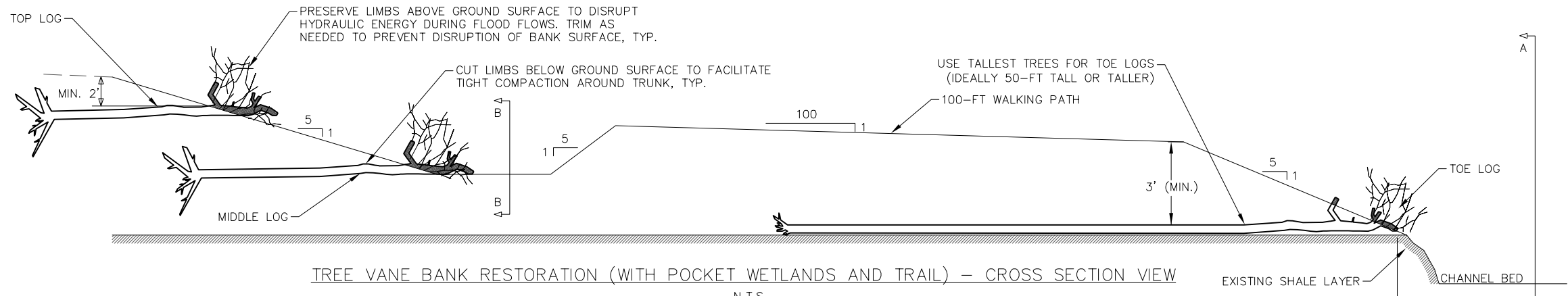
DETAILS
 LOWER EAST FORK PROJECT

DATE				
------	--	--	--	--

6/30/2023
 DRAWN BY: AER

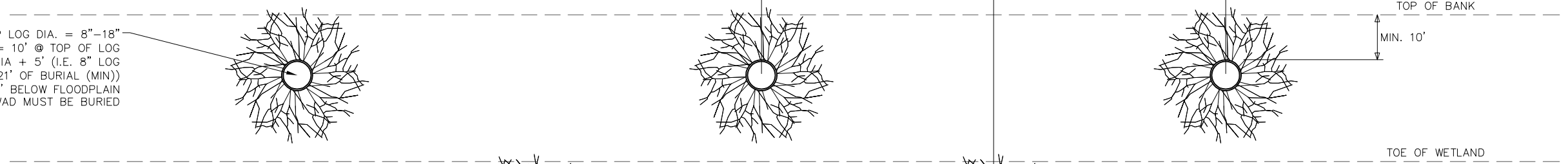


SHEET NUMBER
 5



TREE VANE BANK RESTORATION (WITH POCKET WETLANDS AND TRAIL) – CROSS SECTION VIEW

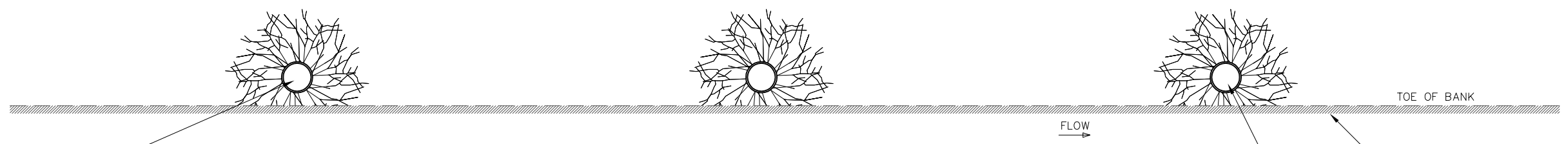
TOP LOG DIA. = 8"–18"
 MAX PROTRUSION FROM BANK = 10' @ TOP OF LOG
 MIN BURIAL IN BANK = 24*DIA + 5' (I.E. 8" LOG NEEDS 21' OF BURIAL (MIN))
 MAX TOP OF LOG ELEVATION = 2' BELOW FLOODPLAIN ENTIRE ROOTWAD MUST BE BURIED



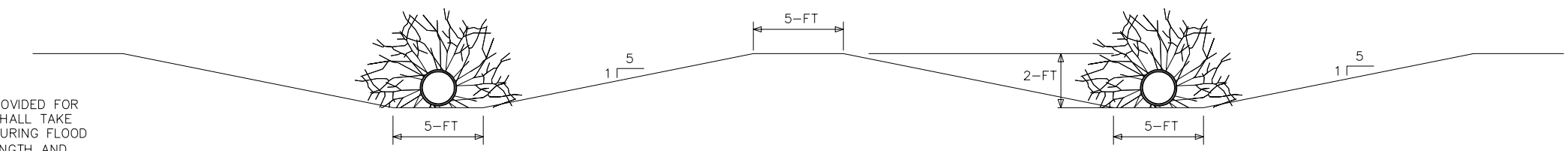
MIDDLE LOG DIA. = 12"–24"
 MAX PROTRUSION FROM BANK = 10' @ TOP OF LOG
 MIN BURIAL IN BANK = 24*DIA + 5' (I.E. 12" LOG NEEDS 29' OF BURIAL (MIN))
 ELEVATION = MIDPOINT BETWEEN TOP AND TOE LOGS

TOE LOG DIA. = 18"–30"
 MAX PROTRUSION FROM BANK = 2' @ BASE
 MIN BURIAL IN BANK = 24*DIA + 5' (I.E. 18" LOG NEEDS 41' OF BURIAL (MIN))
 MIN ELEVATION = BASE OF LOG AT TOP OF SHALE

TREE VANE BANK RESTORATION (WITH POCKET WETLANDS AND TRAIL) – PROFILE VIEW (A-A)



TREE VANE BANK RESTORATION (WITH POCKET WETLANDS AND TRAIL) – PROFILE VIEW (B-B)



NOTE: MINIMUM BURIAL EXTENTS PROVIDED FOR CONVENIENCE ONLY. CONTRACTOR SHALL TAKE MEASURES TO PREVENT FLOATING DURING FLOOD FLOWS (E.G., ADDITIONAL BURIAL LENGTH AND DEPTH, SATURATING THE LOGS PRIOR TO BURIAL, ADDITIONAL ANCHORING STRATEGIES, ETC.) AT NO ADDITIONAL COST TO OWNER

PREPARED FOR:
 CLERMONT SOIL & WATER
 CONSERVATION DISTRICT

DETAILS
 LOWER EAST FORK PROJECT

DATE	
------	--

6/30/2023

DRAWN BY: AER



SHEET NUMBER

6

LIVE STAKES FOR STREAM CORRIDORS

BOTANICAL NAME	COMMON NAME	SITE PREFERENCE	WETLAND STATUS	SHADE TOLERANCE
<i>Cephalanthus occidentalis</i>	COMMON BUTTONBUSH	WET	OBL	TOLERANT
<i>Salix nigra</i>	BLACK WILLOW	WET	OBL	INTOLERANT
<i>Physocarpus opulifolius</i>	NINEBARK	WET, MOIST	FACW	INTOLERANT
<i>Salix interior</i>	SANDBAR WILLOW	WET, MOIST	FACW	INTOLERANT
<i>Diospyros virginiana</i>	COMMON PERSIMMON	WET, MOIST	FAC	TOLERANT
<i>Cornus drummondii</i>	ROUGHLEAF DOGWOOD	ALL	FAC	INTERMEDIATE TOLERANCE
<i>Nyssa sylvatica</i>	BLACKGUM	ALL	FAC	TOLERANT
<i>Sambucus nigra</i>	ELDERBERRY	ALL	FAC	INTERMEDIATE TOLERANCE
<i>Viburnum dentatum</i>	ARROWWOOD VIBURNUM	MOIST, FLAT	FAC	INTERMEDIATE TOLERANCE
<i>Viburnum recognitum</i>	SOUTHERN ARROWWOOD	WET, MOIST, FLAT	FAC	TOLERANT

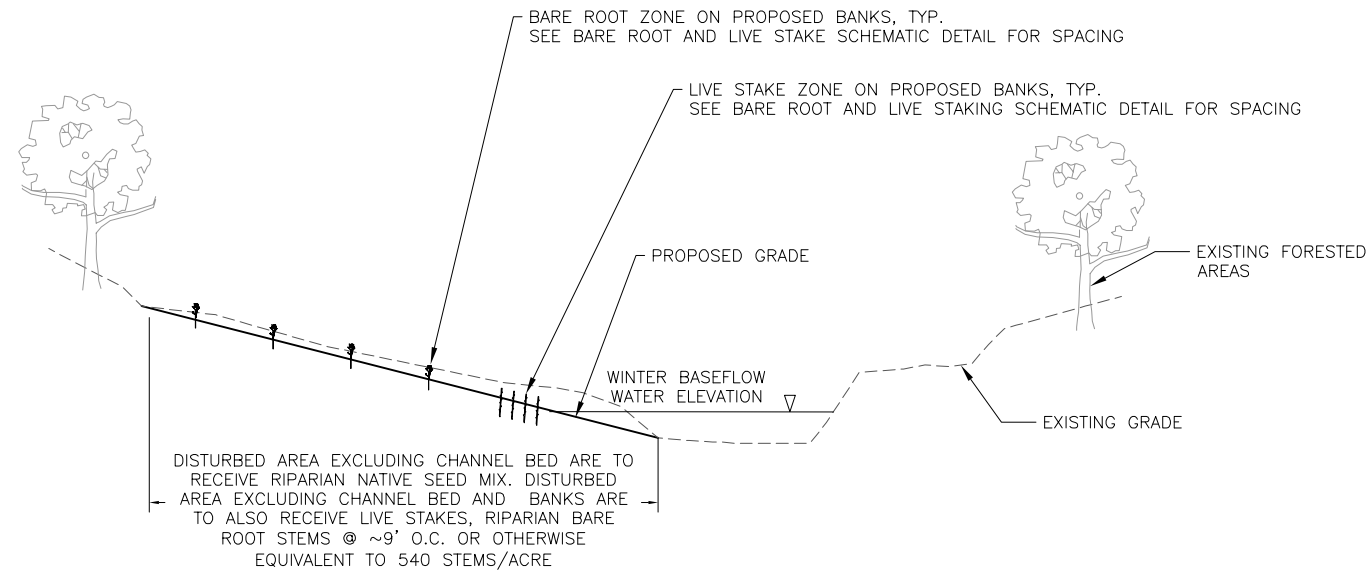
FOR LOWER EAST FORK, EXCLUSIVELY USE LIVE STAKES OF THE FACW OR OBL WETLAND STATUS WITH FIRST ROW BEGINNING AT THE WINTER BASE FLOW WATER ELEVATION.

EXCLUSIVELY OBL OR FACW STATUS BARE ROOTS FOR THE FIRST TWO ROWS OF BARE ROOTS. FAC AND FACU STATUS SHOULD BE USED FOR THE REMAINING ROWS OF BARE ROOTS MOVING UP THE BANK.

BARE ROOT SPECIES FOR STREAM CORRIDORS (540 STEMS/ACRE = 9' O.C.)

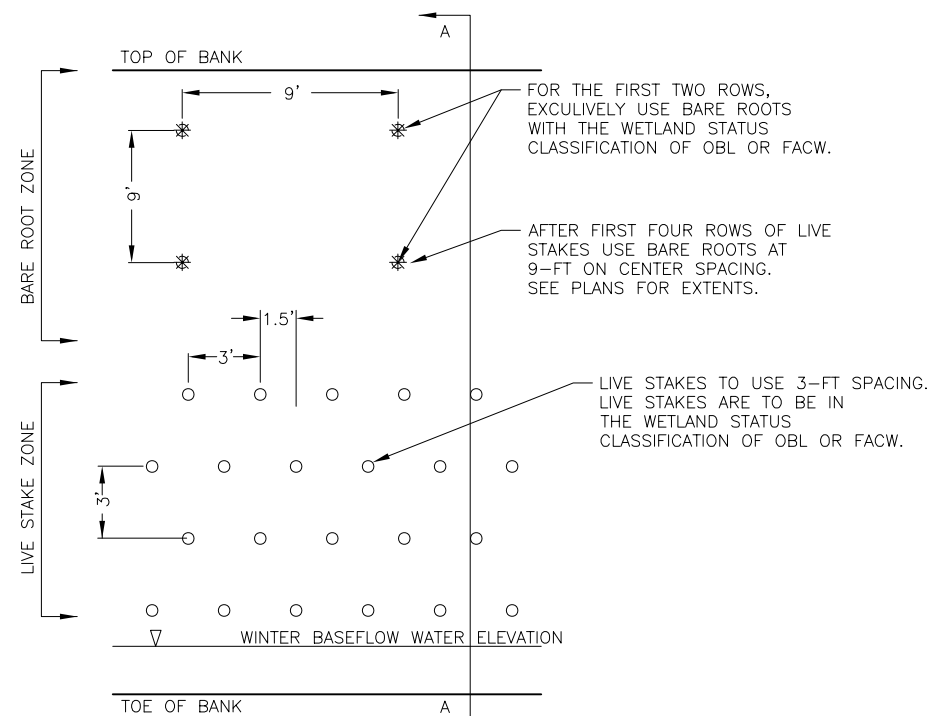
BOTANICAL NAME	COMMON NAME	SITE PREFERENCE	WETLAND STATUS	SHADE TOLERANCE
TREES				
<i>Acer saccharum</i>	SUGAR MAPLE	MOIST, FLAT	FACU	TOLERANT
<i>Aesculus glabra</i>	OHIO BUCKEYE	MOIST, FLAT	FACU	TOLERANT
<i>Carya cordiformis</i>	BITTERNUT HICKORY	WET, MOIST, FLAT	FACU	INTOLERANT
<i>Carya ovata</i>	SHAGBARK HICKORY	MOIST, FLAT	FACU	INTERMEDIATE TOLERANCE
<i>Diospyros virginiana</i>	COMMON PERSIMMON	WET, MOIST	FAC	TOLERANT
<i>Fagus grandifolia</i>	AMERICAN BEECH	MOIST, FLAT	FACU	TOLERANT
<i>Gymnocladus dioica</i>	KENTUCKY COFFEETREE	MOIST, FLAT	NONE	INTOLERANT
<i>Juglans nigra</i>	BLACK WALNUT	MOIST, FLAT	FACU	INTOLERANT
<i>Liriodendron tulipifera</i>	TULIPTREE	MOIST	FACU	INTOLERANT
<i>Nyssa sylvatica</i>	BLACKGUM	ALL	FAC	TOLERANT
<i>Platanus occidentalis</i>	AMERICAN SYCAMORE	MOIST, FLAT, WET	FACW	INTERMEDIATE TOLERANCE
<i>Quercus macrocarpa</i>	BUR OAK	DRY, MOIST, FLAT	FAC	INTERMEDIATE TOLERANCE
<i>Quercus muehlenbergii</i>	CHINQUAPIN OAK	DRY	UPL	INTOLERANT
<i>Quercus rubra</i>	RED OAK	MOIST, FLAT	FACU	INTERMEDIATE TOLERANCE
<i>Quercus shumardii</i>	SHUMARD OAK	DRY, FLAT	FAC	INTOLERANT
<i>Tilia americana</i>	AMERICAN BASSWOOD	MOIST, FLAT	FACU	TOLERANT
SMALL TREES AND SHRUBS				
<i>Asimina triloba</i>	PAWPAW	ALL	FAC	TOLERANT
<i>Cercis canadensis</i>	EASTERN REDBUD	ALL	FACU	TOLERANT
<i>Cornus drummondii</i>	ROUGHLEAF DOGWOOD	ALL	FAC	INTERMEDIATE TOLERANCE
<i>Corylus americana</i>	AMERICAN HAZELNUT	MOIST, FLAT, WET	FACU	INTERMEDIATE TOLERANCE
<i>Lindera benzoin</i>	SPICEBUSH	ALL	FAC	INTERMEDIATE TOLERANCE
<i>Viburnum dentatum</i>	ARROWWOOD VIBURNUM	MOIST, FLAT	FAC	INTERMEDIATE TOLERANCE

CONTRACTOR TO MANAGE ALL INVASIVE SPECIES ACCORDING TO THE INVASIVE PEST MANAGEMENT PLAN WITHIN A MINIMUM OF 100' FROM THE PROPOSED TOP OF BANK AND WITHIN ALL DISTURBED AREAS.



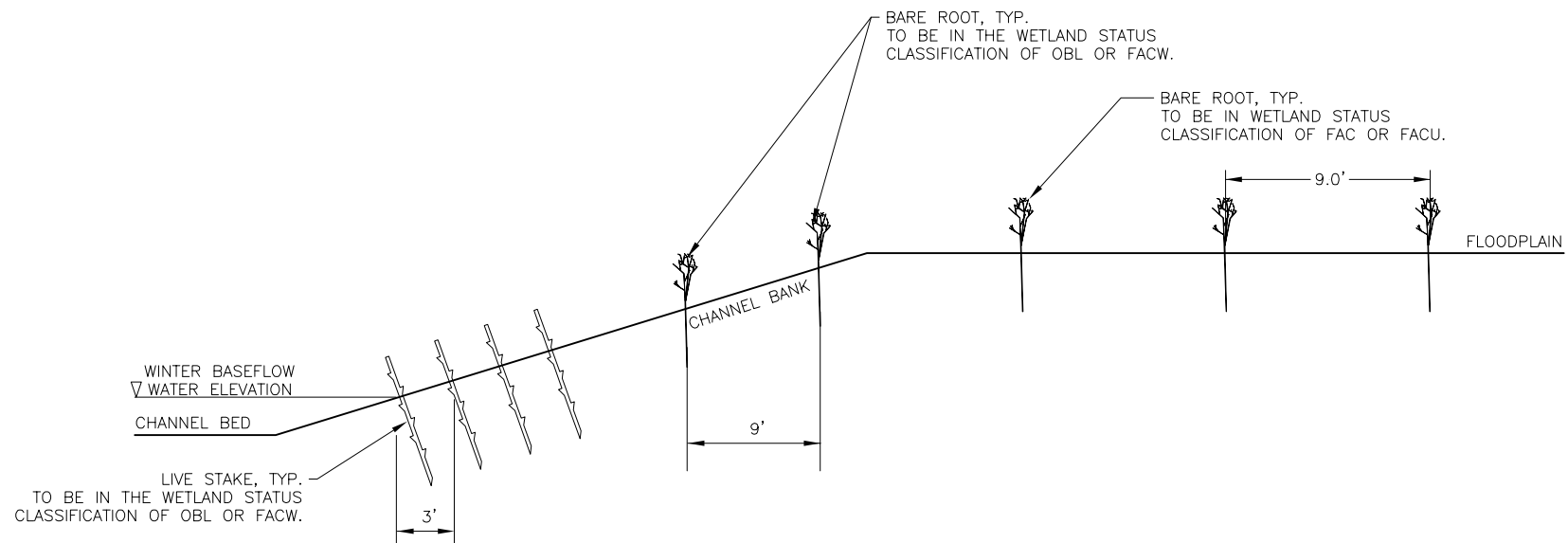
TYPICAL PLANTING CROSS SECTION FOR LOWER EAST FORK

N.T.S.
NO PLANTING REQUIRED OR ALLOWED IN PROTECTED ARCHAEOLOGICAL ZONES. CONTRACTOR SHALL SELECT VEGETATION WITH SITE PREFERENCE APPROPRIATE FOR LOCATION SUCH THAT THE SURVIVAL CRITERIA IN THE SPECIFICATIONS ARE MET.



PLANTING ON REGRADED BANKS OF LOWER EAST FORK - PLAN VIEW

N.T.S.



PLANTING ON REGRADED BANKS OF LOWER EAST FORK - SECTION A-A

N.T.S.

PREPARED FOR:

CLERMONT SOIL & WATER
CONSERVATION DISTRICT

DETAILS
LOWER EAST FORK PROJECT

DATE

6/30/2023

DRAWN BY: AER



SHEET NUMBER

7